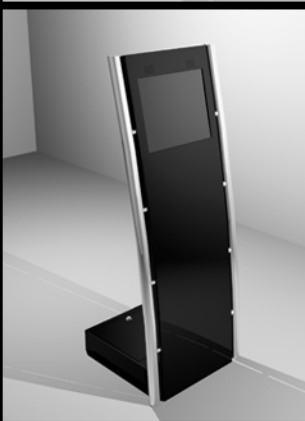
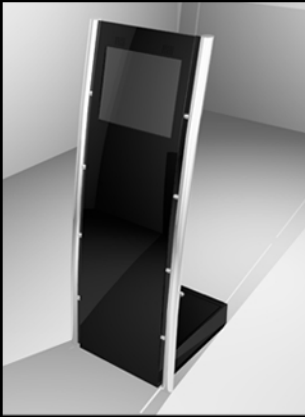


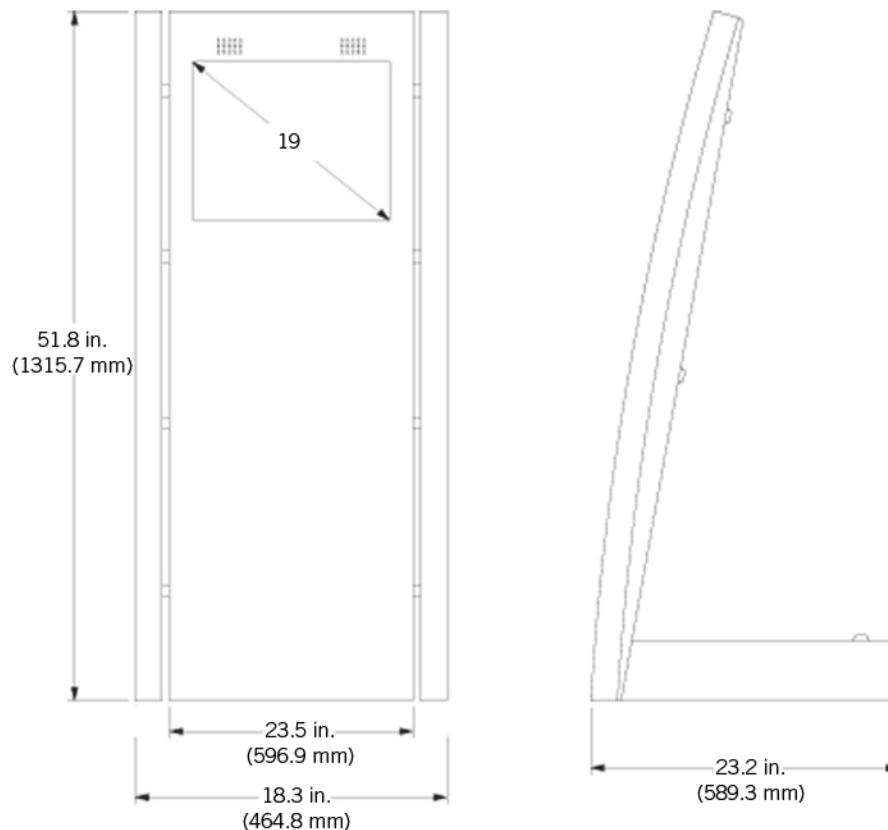
# SLABB



## DESCRIPTION:

The Slabb X5 kiosk is a smart blend of stainless steel, simplicity, elegance, function and aesthetics. Its rugged indoor design allows it to be placed in most public indoor access areas.

## DIMENSIONS:



## SPECIFICATIONS:

- 16 Gauge Mild and Stainless Steel Enclosure
- 19" LCD Monitor (1280 X 1024 Max Resolution)
- Vandal Resistant Powder coat Finish
- Brushed Stainless Steel Poles with spacers
- Cooling Fan in base
- Steel Power Strip
- Large Access Doors with Tubular Locks/Keys
- Protective Glass (if no touchscreen used)
- ADA Compliant Design
- Packed Dimensions: 30" Deep X 18.5" Tall X 68" Wide
- Kiosk Weight: 85 lbs
- Packed Weight: 120 lbs
- Add 7 pounds for keyboard/trackball
- Add 12 pounds for book sized PC

## OPTIONS:

- Displays
- LCD Monitor
- Enclosure Options
- Logos/Graphics
- Input/Output Devices
- Keyboard/Trackball
- Touch screens
- PC
- Brochure Holders
- Kiosk Base
- Packaging
- Writing Tray for Keyboard
- Travel Accessories
- Multimedia
- Wireless
- Protection

# X5-19